
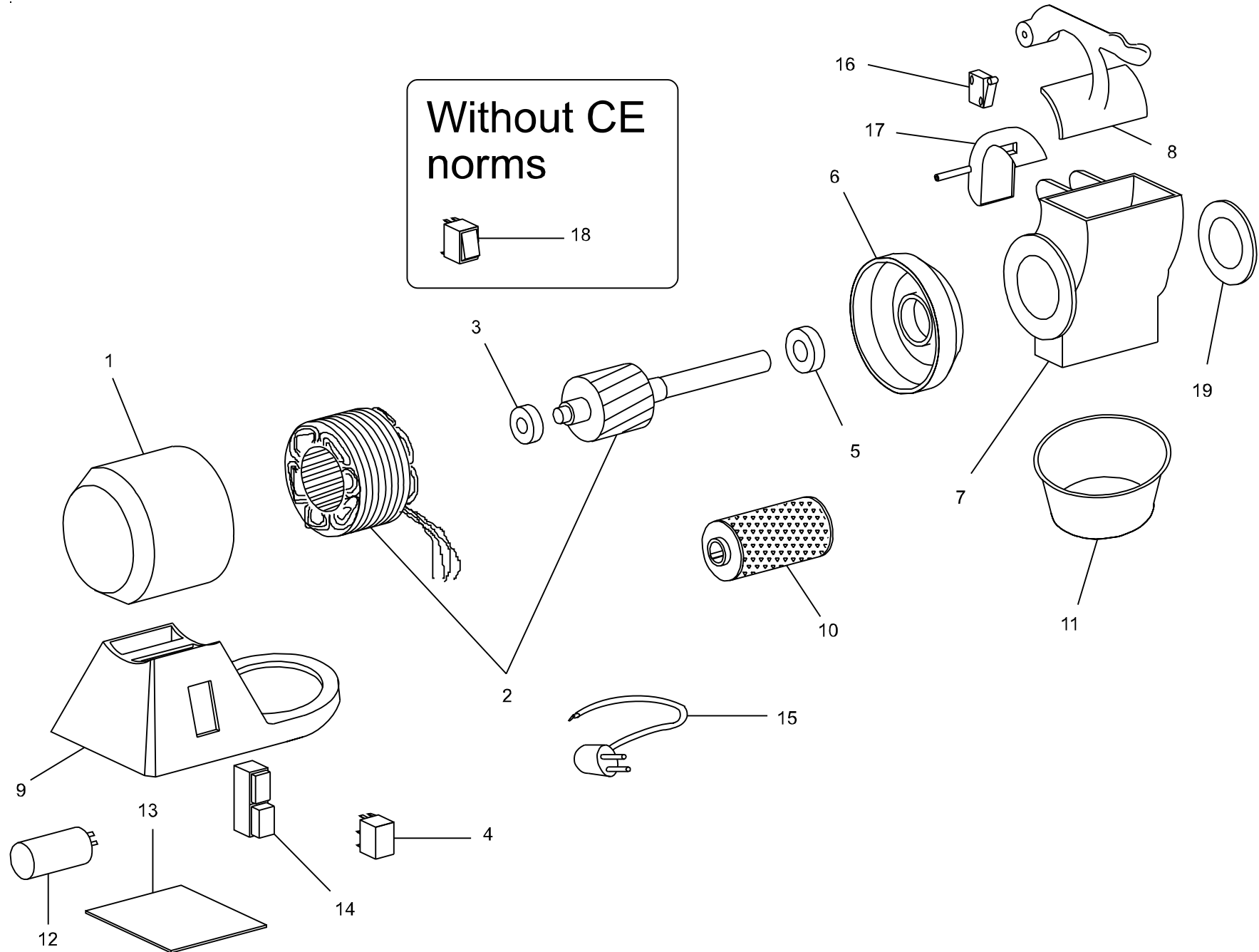


Without CE norms



18



Rif./Ref.	Codice/Code	Sigla /Features	Descrizione/Description
1	CO4339		Carcassa
2	CO2982	230V/1Ph/50Hz	Motore
3	SL2472	6202 ZZ	Cuscinetto
+ 4	SL3394	230V/1Ph/50Hz - CE norms	Relay
5	SL1799	6004 ZZ	Cuscinetto
6	CO4334		Calotta
7	CO0869		Bocca
7	CO4333	01/04/08 f.p.(*)	Bocca
8	CO0867		Pressore
8	CO4332	01/04/08 f.p.(*)	Pressore
9	CO4336		Base
10	CO2894		Rullo
11	CO4338		Recipiente
12	CO1442	10µF	Condensatore
13	CO4315		Fondo
+ 14	CO0866	CE norms	Pulsante
14	CO3278	01/04/08 f.p.(*)	Pulsante
15	SL1671	1Ph+N+Gnd	Cavo elettrico
+ 16	CO4919	CE norms	Microinterruttore
16	CO4330	02/10/07 f.p.(*)	Microinterruttore
17	CO4920	CE norms	Copertura
+ 18	CO1097		Interruttore
19	CO0868		Tappo